

Baller Motivate Class I

Class I Sports Floor / Court

Baller Motivate Class I is designed specifically for courts and multipurpose rooms. It features a 2mm vinyl surface layer factory fusion bonded using itsTRU® technology to a 5mm Class I VCR base layer to create a Class I sports floor. The Baller wood visuals are designed to replicate traditional wood court visuals and can be combined with the Baller solid colors to create court accents and borders.

BUILT ON
itsTRU
TECHNOLOGY

Product Attributes

- **20mil Clear Polyurethane Reinforced Wear Layer**
Provides exceptional, commercial grade durability
- **Fiberglass Reinforced 2mm Vinyl Surface Layer**
Provides realistic wood/court visuals
- **5mm Vulcanized Composition Rubber Motivate Base Layer**
Provides excellent safety and ergonomic performance

Nominal Dimensions

Available as a standard in rolls. Talk to your local sales rep to determine availability, pricing, minimums, and lead times. **See the Tech Manual and Guide Specs** for installation instructions and product specifications.



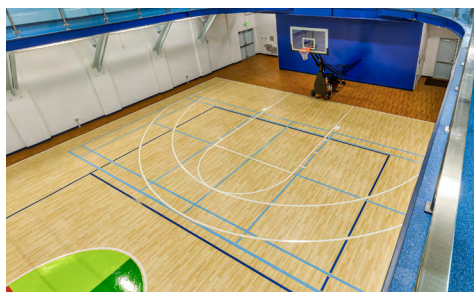
7mm (2mm + 5mm) x 70" (1.78m)
Weld rod required
Standard Roll Length: 30 LF
Max Roll Length: 65 LF

Applications

- Multi-purpose / Courts
- Also suitable for:
 - Common Areas
 - Cardio
 - Group Exercise / Dance
 - Yoga
 - Spin
 - Selectorized Strength
 - Locker Rooms / Restrooms
 - Therapy / Rehab
 - Living Spaces
 - K-12 / Higher Education
 - Retail

Benefits

- Quiet underfoot
- Ergonomic
- Class I force reduction
- Resistant to static and rolling loads



NRG

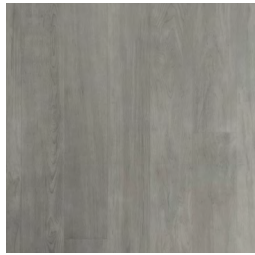
- Force Reduction: 12.1%
Absorption of impact energy
 - Energy Restitution: 64.5%
Useful return of impact energy
- Typical Deltec Field Tester Results

Color Swatches



Spike

250



Clutch

251



Slam

252



Varsity

253



Academy

254



Blue

271



Green

275



Indigo

270



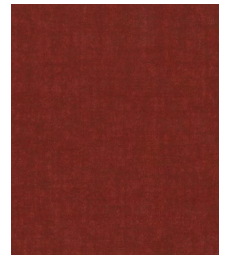
Orange

272



Purple

274



Red

273

ASTM F2772

Standard Specification for Athletic Performance Properties of Indoor Sports Floor Systems



Standard Vertical Deformation
(ASTM F2157)
PASS



Ball Rebound
(ASTM F2117)
PASS



Surface Effect Slip Resistance
(ASTM E303)
PASS



Force Reduction
(ASTM F2569)
CLASS I

Technical Details

Performance Criteria	Test Standard	Typical Results
Coefficient of Friction	ASTM D2047	>0.8
Chemical Resistance	ASTM F925	Good
Resistance to Light	ASTM F1515	Pass
Flammability- Critical Radiant Flux	ASTM E648	Class I
Flammability- Pill Test	ASTM D2859	Pass
Recovery after Static Load Recover after Static Load @ 500 PSI	ASTM F970 ASTM F970 Modified	0.007" 0.012"
Dynamic Rolling Load	ASTM F2753	No change, no damage (@10,000 cycles)
G-Max	Clegg	343
Impact Insulation Class (IIC)*	ASTM E492	55
Delta IIC (floor coverings)	ASTM E2179	23
High Frequency IIC (HIIC)*	ASTM E3222	60
Noise Reduction Coefficient	ASTM C423	0.10

*Tested on a 6" concrete slab with no ceiling.